

Windermere & Staveley District Neighbourhood Forum Annual Newsletter

July 2010

Issue No. 1

Your County Councillors

Hello and welcome to the Windermere & Staveley District Neighbourhood Forum Newsletter. Over the last year your County Councillors have led on a number of community projects throughout the Windermere & Staveley District Forum area.

This Forum Newsletter highlights the activities of your Neighbourhood Forum over the last year and to share with you some of our many success stories.

We are always keen to hear your feedback or suggestions so please feel free to contact us. You can contact us via the Area Support Team using the contact details on page four or online at www.cumbria.gov.uk



From left to right County Councillors: Jo Stephenson Windermere, Jim Bland Lyth Valley and Stan Collins Upper Kent

Forum Grant pays for lifesaving equipment

Windermere First Responders have recently been awarded a grant at the Windermere and Staveley Neighbourhood Forum which has enabled them to buy potentially lifesaving equipment. The charity was awarded the £850 grant by residents and councillors at the forum in order to buy a defibrillator.

There are 15 First Responder groups based around the South Lakes area. They are trained to give potentially lifesaving first aid following a 999 call until an ambulance crew are able to make it to the scene. The First Responders have five defibrillators stored at locations around the Windermere area. Having had more than 110 call outs between October 2009 and January 2010, and covering an area around the edge of the lake, the team found that an extra set of equipment would save valuable minutes in an emergency.

Mark Jones is Chair of Windermere First Responders. He says: "The grant for the new defibrillator will help speed up our response time to many of our call outs. We know that the first eight minutes after a heart attack, for example, are vital. By storing the equipment in some of our busiest areas we can avoid making a detour and get to the scene as quickly as possible.



"It was straightforward to apply for a grant - I just filled out the application and then went along to the neighbourhood forum to tell residents a little about what we do, what we would use the money for, and how our work benefits local people and they decided we were an organisation they'd like to fund. I'd encourage other organisations like us to apply for a grant if they need this kind of support as it's been invaluable to us."

Cllr Jo Stephenson, Cumbria County Councillor for Windermere, said: "This is fantastic news for the area and shows what a difference neighbourhood forum grants can make to a local area.

"This defibrillator will inevitably help save the life of someone in the future and this is a perfect example of public money doing exactly what it should – improving the community."

Your local
Neighbourhood
Forum

Your Neighbourhood Forum has evolved!

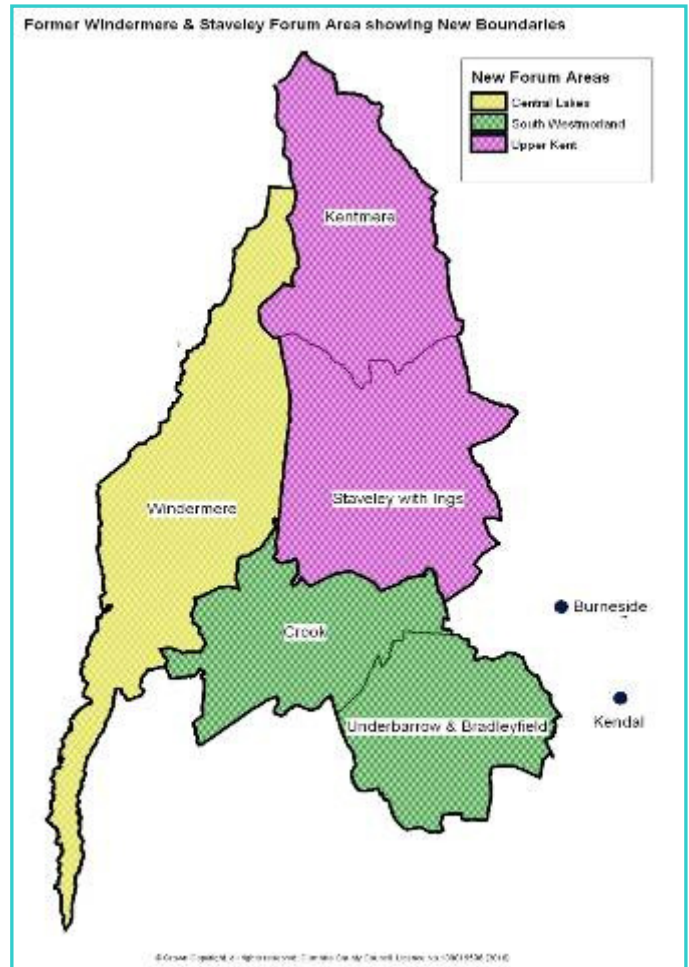
The Windermere & Staveley District Neighbourhood Forum has evolved into three new Neighbourhood Forum areas.

Windermere parish including the towns of Windermere and Bowness move into the new Central Lakes Neighbourhood Forum area.

Kentmere and Staveley with Ings parishes now join the Upper Kent Neighbourhood forum area while the parishes of Crook and Underbarrow & Bradleyfield are merged into the new South Westmorland Neighbourhood Forum area.

The changes reflect the recent development of Local Area Partnerships (LAP's) across the district. The new Forum areas will cover the same geographical areas as the LAP's and continue to enable local people to have their say on local issues and support local community projects and initiatives.

Further details on the new look Neighbourhood Forums can be found on the council's website www.cumbria.gov.uk/neighbourhoodforums or by contacting the County Council's Community Team for South Lakeland on 01539 713180.



Local Area Partnerships (LAPs)

LAPs are made up of parish, district and county councillors for the area, with the intention of working together to find sensible solutions to local issues and services.

Each of the LAPs have now identified their main priorities within their area:

LAP	Main Priorities
Central Lakes	Improving Public Spaces Planning for community emergencies Responding to the 'Talk Toilets' consultation
Upper Kent	Highways maintenance Community solutions to improved broadband
South Westmorland	Highways maintenance Activities for young people Affordable Housing

Its early days but the LAPs are developing action plans based on community parish plans, issues logged and community knowledge and feedback. As LAPs develop they will be able to work alongside Neighbourhood Forums ensuring that everyone living in the area has the opportunity to influence the work of the LAP.

Opportunity for Local Groups Needing Money

Putting a new heating system in the village hall? Making a mural? Starting an environmental project? Fund-raising for new playground equipment? Thinking of a new community project?

Community projects which benefit local people can be considered for funding by the Neighbourhood Forums. We can also suggest other organisations which may also fund your project.

If you have an idea or are involved in a group which needs funding or other advice, please call the County Council's Area Support Team for South Lakeland on 01539 713180.



Kentmere Hydro Trust

An early grant from Neighbourhood Forum helped to kindle the beginnings of the Kentmere Hydro Trust which is a £1.6M community project intended to generate clean, renewable hydro-electricity. Earlier in the year the Forum was informed about the progress the project has made.

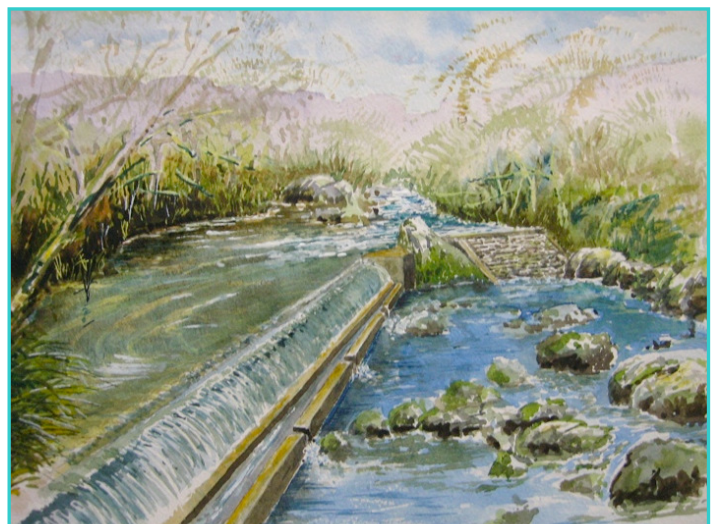
It is the community's prime objective to generate clean energy in a way that enables the profits to be recycled back to benefit the community and the wider public and help to reduce the reliance on carbon fuels. It is planned that the scheme will be located along a sensitive stretch of the River Kent, a Site of Special Scientific Interest (SSSI) and Special Area of Conservation (SAC) designated area - the highest European category of conservation.

To harness the river's power as a source of sustainable energy the methods of excavation, installation, and overall attention to ecological and environmental concerns are a priority. The community project when complete will convert Kentmere's abundant rainfall into about 1225MWh of hydro-electricity annually. The installation will take advantage of the 38m head by diverting a portion of the river water into a 350m underground penstock, eventually dropping to a small stone-faced powerhouse containing a 360kW turbine and generator system. The water will then be returned to the river and the electricity sold to the national grid connected to the existing power lines which cross the land close to the site of the power-house.

It has been agreed that the amount of water in the river between the weir and the power-house will never be allowed to fall below a level which is equivalent to a normal dry period so that wildlife in and beside the river would not be affected.

The Kentmere Hydro Trust also aims to inspire other communities to increase the supply of renewable energy, whilst providing the opportunity to support a variety of charitable objectives both here and farther a field.

For further information visit www.kentmerehydro.org



Artist's impression of the proposed weir painted by Hilary Fry

Got something on your mind? There are loads of ways to 'Say It'

If you have a comment, suggestion or concern, about the County or District Councils or services in your community, there are loads of ways for you to speak up and influence how local decisions are made.

Get in touch - Call the Council's Community Team for South Lakeland using the contact details below. They can help you find the best way for you to get involved with local issues, advice on how to get your voice heard on the issues that matter to you or find funds for a community project.

Go Online - Find the way to speak up and get involved that suits you, as well as local news and projects at www.cumbria.gov.uk/sayit

Contact your Councillor - Your county or district councillor can provide advice and suggestions to your concerns, speak on your behalf or help you get in touch with the right people. Find your councillor at www.cumbria.gov.uk/sayit or by contacting the Community Team for South Lakeland.

Come along to a Neighbourhood Forum - Neighbourhood Forums are an opportunity for you to get involved in issues affecting your area, and to get information about local services. How could things in your community be improved? You can talk to decision makers and local residents, and raise your own ideas for community improvement.

Your next Neighbourhood Forum Meeting...

Central Lakes Forum (Windermere), Wednesday 28th July, 7pm in the Millennium Lounge, Marchesi Centre

South Westmorland Forum, Monday 20th Sept, 7:30pm at Brigsteer & Helsington Village Hall

Upper Kent Forum, Tuesday 5th October, 7:30pm at Old Hutton Village Hall

Contact us:

If you would like any further information about any of the issues raised in this newsletter, or wish to suggest future Forum topics of discussion, please get in touch with your County Councillor or Neighbourhood Development Officer.

South Lakeland Area Support Team:

County Offices
Busher Walk
Kendal
LA9 4RQ

Tel: 01539 713180

Email: communityunitsl@cumbriacc.gov.uk

Web: www.cumbria.gov.uk/neighbourhoodforums

Debbie Binch

Neighbourhood Development Officer

Tel: 01539 713181

Email: debbie.binch@cumbriacc.gov.uk