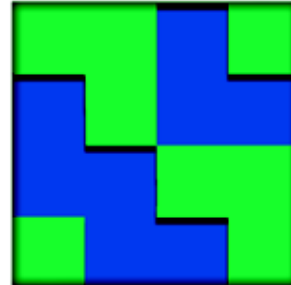


SOUTH LAKELAND
CRIME & DISORDER
REDUCTION
PARTNERSHIP



LIGHT TOUCH
STRATEGIC ASSESSMENT
PRIORITIES 2009 / 2010

DECEMBER 2008

CONTENTS

1.	Introduction	Page 3
2.	Current South Lakeland Priorities 2008/09	Page 3
3.	CDRP Structure	Page 4
4.	Review of current performance	Page 4
	4.1 Anti Social Behaviour and Criminal Damage	Page 4
	4.2 Acquisitive crime	Page 5
	4.3 Violent crime	Page 7
	4.4 Domestic Violence	Page 8
	4.5 Public Reassurance	Page 9
	4.6 Alcohol	Page 10
	4.7 Substance Misuse	Page 10
	4.8 Prolific Offenders	Page 10
	4.9 Road Safety	Page 11
5.	Conclusion and Recommendations	Page 11
6.	Acknowledgements	Page 12
7.	Contact details	Page 12

1. Introduction

South Lakeland Crime and Disorder Reduction Partnership (CDRP) are currently working to a 3 year Partnership Plan, published in April 2008. This Plan clearly sets out how the Partnership will tackle key priority crime types, identified through a Strategic Assessment completed in 2007.

As part of new legislative requirements for CDRPs, the 3 year Partnership Plan should be refreshed annually, using the Strategic Assessment as the evidence base to inform change.

For 2008, it has been agreed with Government Office of the North West (GONW) that Cumbrian CDRPs produce a 'light touch' Strategic Assessment. This will enable the full SA to be produced in June 2009, aligning the time scale for production to the Local Area Agreement (LAA) refresh and partner budget setting processes.

Information for this 'light touch' SA has come from a variety of sources, but the main contributions are from the Cumbria Police South Area Strategic Intelligence Assessment, Cumbria Drug and Alcohol Action Team (CDAAT), Cumbria Fire and Rescue Service and Cumbria Partnership Support Team (CuPS).

The time frame for the data used to inform the assessment is from April to October 2008, unless otherwise stated.

2. Current South Lakeland Priorities 2008/2009

The current priorities for South Lakeland CDRP are:

- ❖ Anti-social Behaviour, including youth disorder
- ❖ Acquisitive Crime, including burglary and vehicle crime
- ❖ Criminal Damage
- ❖ Domestic Violence
- ❖ Public Reassurance
- ❖ Prolific and Priority Offenders
- ❖ Substance Misuse

The CDRP has adopted the same targets for 2008/2009 as those set for South Lakeland by Cumbria Police and these are shown below .

Fig 1 – South Lakeland CDRP targets 2008 / 2009

CRIME TYPE	TARGET
Burglary	115
Theft of a motor vehicle	103
Theft from a motor vehicle	242
Theft including retail theft	1288
Overall Violent Crime	1095
Assault with injury (NI 20) Target to reduce by 5%	472
Criminal damage	1602

Anti Social Behaviour reports	6502
Domestic Violence Reports	625+

3. CDRP Structure

In order to deliver activity against these priorities and to make the best use of resources available to the CDRP, the existing task group structure and membership were reviewed at the start of 2008, as part of the development of the 3 year Partnership Plan. Resulting from that review, anti social behaviour and criminal damage are now addressed together, through the Respect task group. The Perception of Crime task group is now known as the Public Reassurance group, as this best reflected the wide range of work of this task group . All other task groups remain unchanged.

4. Review of current performance

Following the first 6 months of activity listed in the Partnership Plan, April to October 2008, the CDRP has reviewed the range of different activities and interventions undertaken against agreed priorities, some of which are highlighted below.

4.1 Anti Social Behaviour and Criminal Damage

The statistics show that anti-social behaviour incidents and criminal damage offences have both reduced. Criminal Damage has reduced from 951 offences between April and October 2007 to 804 offences between April and October 2008, a 15% reduction. The trend line for criminal damage is shown in Fig 3. Anti social behaviour has reduced over the same period, with incidents down by 524, a 12.5% reduction. (Fig 2)

Fig 2 – Anti social behaviour incidents, data supplied by Cumbria Police

Apr-07	692	Apr-08	496
May-07	509	May-08	698
Jun-07	555	Jun-08	510
Jul-07	559	Jul-08	492
Aug-07	641	Aug-08	574
Sep-07	596	Sep-08	533
Oct-07	647	Oct-08	372
	4199		3675

Possible reasons for this reduction include work completed by both the police and partners, the impact of successful operations and a co-ordinated approach to specific times of the year that historically are problematic.

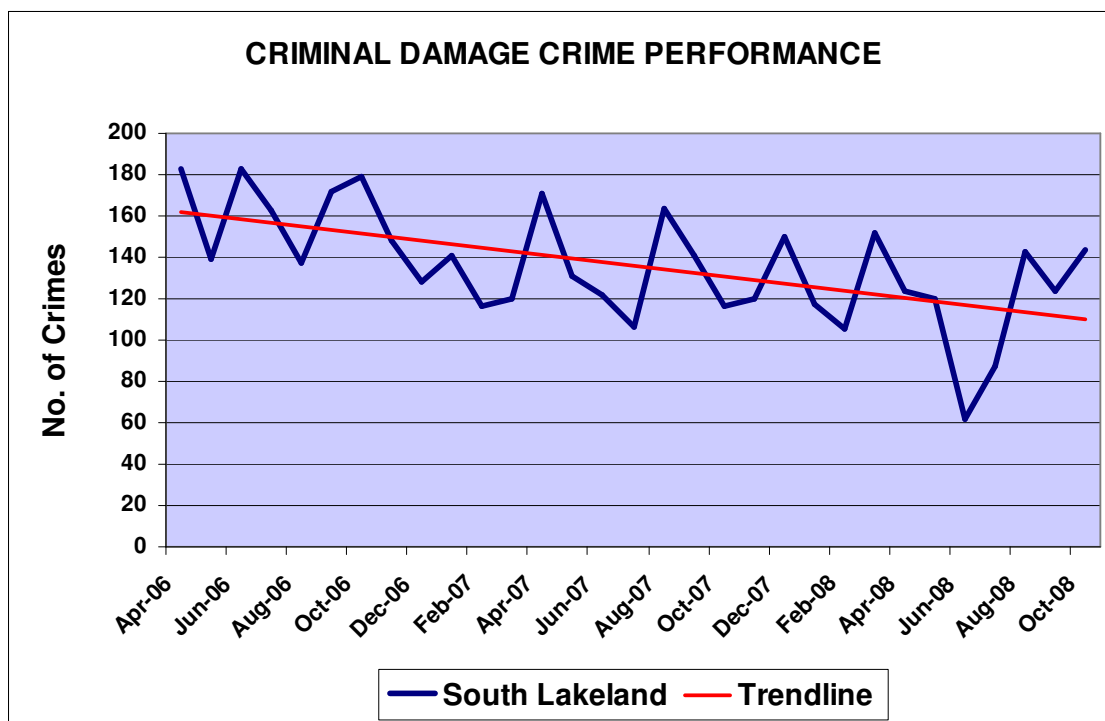
Despite these reductions, the Cumbria Constabulary Public Consultation Survey 2008 for South Lakeland highlights Anti social behaviour on the street as the top worry and priority for the police in 2009. It should be noted that only 5% of respondents were aged under 35 years and over 50% were aged between 55 and 74 years.

Youth disorder continues to be an issue in Streetsafe questionnaires and Key Individual Network (KIN) surveys

Current Partnership work

- Detached youth work through Young Cumbria, directed to identified locations through the “tasking package” process e.g. Birdcage in Kendal and Canal tow path, Kendal
- Implementation of Operation SMART, through Cumbria Police working with partners to target youth disorder in identified locations through diversion, preventative and enforcement work
- Straightline Stars worker (formerly Prevent & Deter) working 1 to 1 with young people on a voluntary basis and offering a broad range of engagement options
- Road Awareness Training run by Cumbria Fire & Rescue Service, targeting anti social young drivers
- Improved lighting in identified locations, based on community consultation, for example, the Canal tow path, Kendal
- Expansion of the “Streetsafe” concept to 2 secondary schools in Kendal
- A range of diversionary activity, including the roll out of the Multi Use Games Area (MUGA) project to Ulverston

Fig 3 – Criminal damage trend line for South Lakeland April 2006 to Oct 2008 – data supplied by Cumbria Police



4.2 Acquisitive Crime

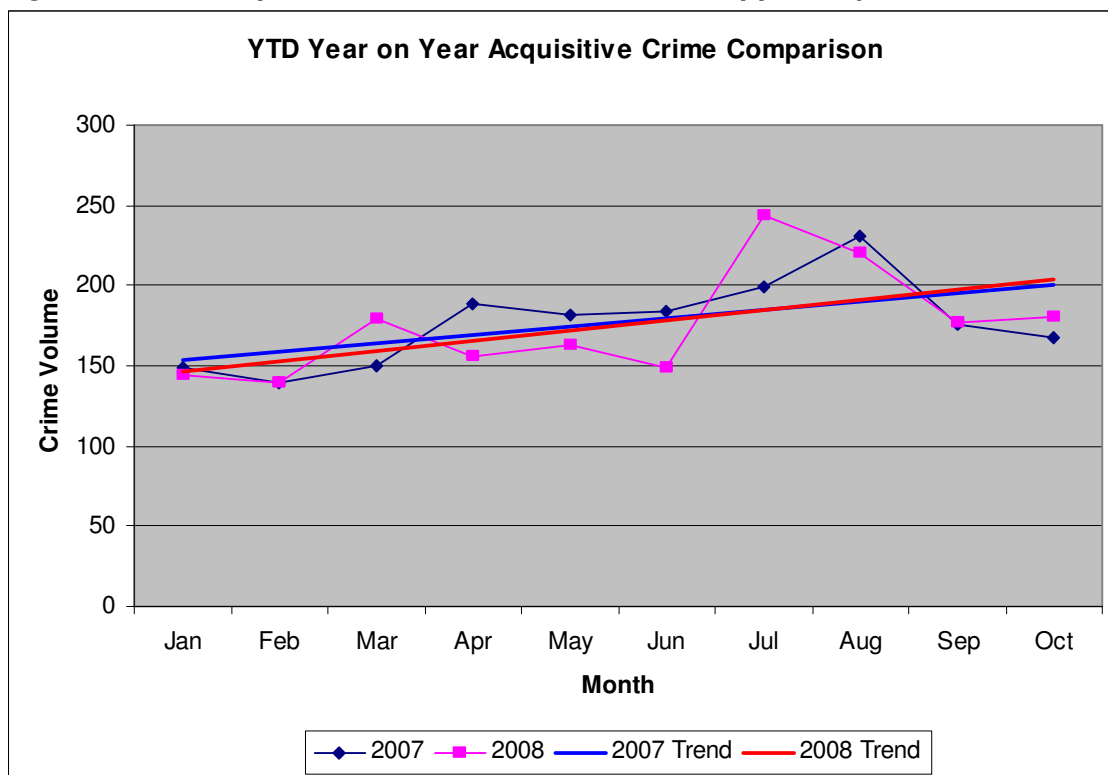
Although South Lakeland’s burglary rate in 2007/08 was the lowest in the North West, at 2.6 per 1,000 households, this crime remains a priority for the CDRP due to the high impact on victims of this crime. Over 50% of burglaries have been to insecure properties especially in summer months with insecure windows and doors. To combat this, the CDRP has concentrated efforts on raising awareness of this through the Lock it or Lose it campaign, which has run since April. From April 2008 to Oct 2008, there have been 76 burglaries in South Lakes, compared to 82 during the same period in 2007.

Distraction burglary and purse thefts have also been an issue in South Lakeland. Between 4 July and 16 August 2008, a total of 32 purse and handbag thefts were reported to police across South Cumbria – 14 in Kendal, 12 in Barrow, 5 in Ulverston and 1 in Bowness-on-Windermere.

Although these account for only a small number of reported crimes, the perpetrators tend to target elderly, more vulnerable residents. Crime prevention advice has been issued, through press releases, home visits, Streetsafes and public meetings e.g. Neighbourhood Forums. The CDRP launched 2 high profile crime prevention campaigns, the “Lock it or Lose it” sticker campaign aimed at securing property and the “Keep it safe” campaign, targeting victims of purse thefts.

There is an expectation that the current economic climate is likely to have an adverse impact on acquisitive crime, including burglary, theft and shoplifting. CuPS have produced statistics from January 2007 to October 2008 for all types of acquisitive crime, including burglary, theft, robbery, mapping the year to date comparisons by a trend line, shown at Fig 4. The situation will be monitored by the Acquisitive Crime task group, who will respond to changes as necessary.

Fig 4 – Overall acquisitive crime trend line – data supplied by Cumbria Police



Current Partnership work

- The CDRP launched the Lock it or Lose it campaign, to raise awareness about insecure properties. This campaign continues
- The Keep it Safe campaign and purse bells initiative to target purse thefts through awareness raising and crime prevention advice
- Kendal Business Against Crime Partnership (KBACP) is supported by CDRP. KBACP operate a radio link scheme for local shops and licensees and manage the bar watch and shop watch schemes in Kendal.

- Targeted Streetsafe operations to build public reassurance and raise awareness of simple crime prevention techniques
- Increased use of Voice Connect system to pass messages from partners and raise awareness of prevention measures
- Development of new Neighbourhood Watch schemes throughout the district

Auto or vehicle crime covers both theft from and of a motor vehicle. As this crime type has seen relatively low levels of offences, the CDRP undertakes a monitoring role, but does not put in additional resources to tackle vehicle crime. Historically, levels of theft of motor vehicles show increases in November and December, with decreases in January and February. Certain vehicle crime offences are dependent on the criminal groups currently active. Improved security in modern vehicles makes it increasingly harder for offenders to complete successful thefts.

From April to October 2008, there have been 169 recorded offences of theft from motor vehicles and 59 recorded thefts of a motor vehicle. Items stolen include CD / radio players, cash, handbags, satellite navigation systems. The police have utilised the Smart water vehicle and Automatic Number Plate Recognition (ANPR) as part of tactical deployment.

Fig 5 Vehicle crime comparison - data supplied by Cumbria Police

Theft of a motor vehicle			
April 07	7	April 08	11
May 07	6	May 08	8
Jun 07	9	Jun 08	3
Jul 07	10	Jul 08	7
Aug 07	11	Aug 08	11
Sep 07	9	Sep 08	12
Oct 07	12	Oct 08	7
Theft from a motor vehicle			
April 07	21	April 08	18
May 07	31	May 08	22
Jun 07	35	Jun 08	16
Jul 07	30	Jul 08	27
Aug 07	32	Aug 08	35
Sep 07	28	Sep 08	22
Oct 07	13	Oct 08	24

In terms of public perception and fear of crime, theft from a vehicle is second only to burglary, based on intelligence from Cumbria Constabulary.

4.3 Violent crime

Across the whole of South Cumbria, violent crime accounts for almost 25% of all recorded offences. In line with the Local Area Agreement (LAA) target for NI 20 Assault with Injury rate, South Lakeland has to reduce this type of crime by 5% during 2008 /2009, against the out turn figure for 2007/08. In the first 6 months of the year, from April to October 2008, the number of violent crimes have decreased overall from 657 to 598 offences.

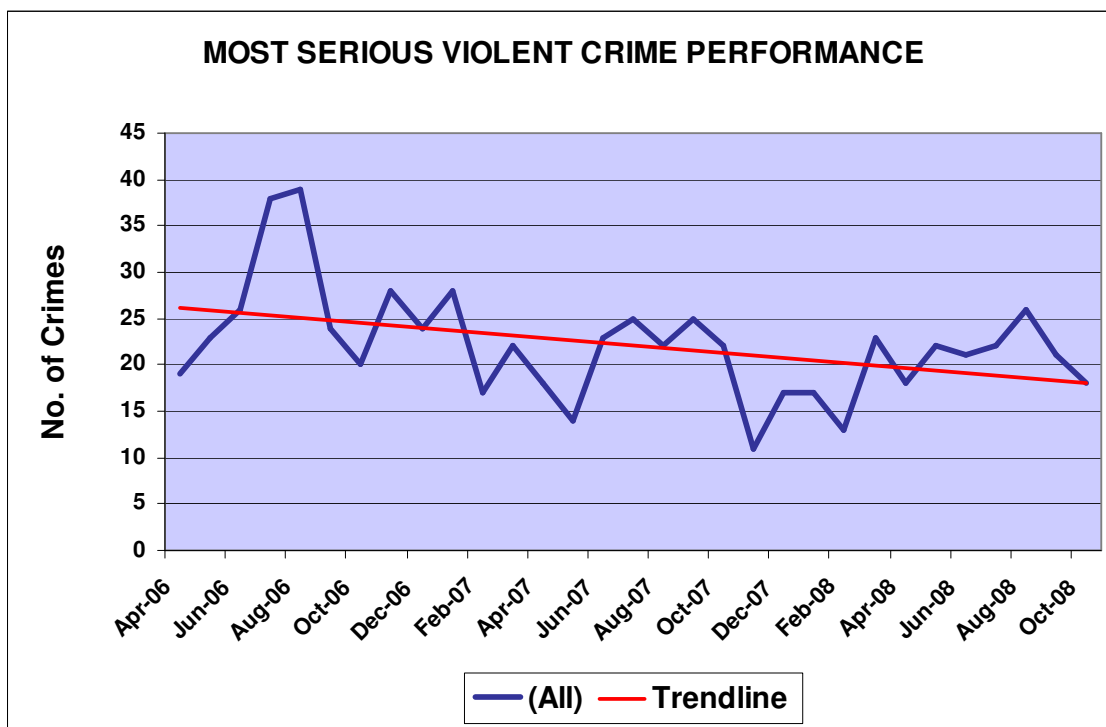
ABH and common assault account for the highest number of offences in south Cumbria, followed by common assault. Results from the Cumbria Constabulary Public Consultation Survey 2008 / 09 suggest that only 49% of South Lakeland residents feel safe in their nearest town centre at night, compared to 90% during the day.

Current Partnership work

- Successful Barwatch schemes operate across South Lakeland, managed by the Kendal Business Against Crime Manager
- Operation Sapphire targeted the early evening night time economy, with high visibility police patrols as an early intervention tactic and utilising head cams
- Christmas alcohol campaigns running as part of the Home office alcohol funding allocation, raising awareness of the potential impact of too much alcohol, with press coverage, promotional materials and radio campaign
- Joint licensing work between SLDC and Cumbria Police to target those premises with poor management
- 1:1 work with young people where alcohol misuse is a contributory factor to behaviour (either personal or parental)

Whilst nationally alcohol misuse has a high profile and the CDRP has a range of initiatives planned, respondents to the Cumbria Constabulary Public Consultation Survey 2008 placed Alcohol misuse 9th in the top ten worries and priorities. Under age drinking came 6th in the same survey

Fig 6 Violent crime data April 2006 – Oct 2008 data supplied by Cumbria Police



4.4 Domestic Violence

In line with the Cumbria Domestic Violence Partnership Business Plan, South Lakeland CDRP has supported a range of new developments across south Cumbria to improve domestic violence services. There is an expectation that these services will deliver the same impact on domestic violence statistics as experienced in North Cumbria where the findings of a national evaluation completed on the “Let go” Domestic Violence project. The key finding was that in 70% of cases the abuse had ceased.

The current legacy Cumbria LAA targets for domestic violence are based on

- Increased reporting of incidents – target 4485
- Reduced repeat victim rate – target 32%
- Increased conviction rates – target 65%

The key data for South Lakeland from April to September 2008 shows the following

Fig 7 Domestic Violence data for South Lakeland - source Cumbria Constabulary

Domestic Violence Incident rate		Domestic Violence Repeat rate	
April 08	47	April 08	46.8%
May 08	58	May 08	58.6%
June 08	52	June 08	46.2%
July 08	46	July 08	50%
August 08	63	August 08	42.9%
Sept 08	49	Sept 08	51%

Current Partnership work

- Specialist Domestic Violence Court now sits in Kendal and Barrow, 1 day a week.
- From July 2008, there are 2 Independent Domestic Violence Advisors (IDVAs), managed by Victim Support and based in Barrow, taking first line referrals from a range of agencies.
- Multi Agency Risk Assessment Conferences (MARACs) are now established in South Cumbria
- Domestic Violence Awareness campaign through posters on toilet doors, including key service numbers for IDVAs and Cumbria Police

4.5 Public Reassurance

South Lakeland CDRP Executive Group agreed that the Perception of Crime task group should be renamed the Public Reassurance task group. This was considered to be a reflection of the broad range of work undertaken by the group and also the target audience. The group aims to reassure South Lakeland communities and to try and influence the view that crime is rising, when in fact, overall it continues to fall. The work of this group has been varied, but the main objectives have been to:-

- ❖ Promote the work of the CDRP and inform local residents of the range of agencies involved in tackling crime and disorder in the district
- ❖ Raise awareness of the low levels of crime in South Lakeland and promote the area as a safe place to live work and visit

The Cumbria Constabulary Public Consultation Survey 2008 asked how safe people felt in different situations at different times. In South Lakeland, 97% of respondents felt either fairly or very safe in their own home during the day and 96% at night. 96% felt safe in their own neighbourhood during the day, but only 81% at night. Looking at town centres at night time, only 49% felt safe, whilst 13% felt unsafe.

Current Partnership work

- The second Community Safety Day was held in Ulverston in May 2008
- Streetsafe campaigns continue and have taken place in schools and local supermarkets
- Lock it or lose it and Purse theft campaigns are currently running
- Media work continues, with every effort to engage local media in positive stories

4.6 Alcohol

It was acknowledged in the Partnership Plan, that alcohol was an issue that impacted on a range of crimes. In South Lakeland, the Local Strategic Partnership (LSP) and CDRP have worked together to produce an alcohol action plan, based on the 4 outcomes of the Cumbria Alcohol Strategy. Following agreement from the CDRP Executive Group and LSP Management Group, activities have been devolved to respective LSP and CDRP task groups.

In addition, a successful bid was made by Barrow and South Lakeland CDRPs to the Home Office for £20,000 towards a range of alcohol interventions up to the end of March 2009, based on 4 elements of work. These include training sessions for bar staff on alcohol retail awareness, brief intervention training for PCSOs, youth workers and a range of partners, alcohol related supermarket Streetsafes and support for a proxy sales campaign.

Alcohol remains a major cross cutting issue for South Lakeland's LSP and CDRP.

4.7 Substance misuse

The impact of drug dealers and users on the local community and the anti-social nature associated with Class A drugs, has been highlighted in Streetsafe operations. The Cumbria Constabulary Public Consultation Survey results for 2008 showed that only 10% of responders thought that people using or dealing drugs was a problem in their area, but drug dealing was considered 5th in the top ten list of worries and priorities for the police next year.

Data from Cumbria Drug and Alcohol Action Team (CDAAT) highlights the numbers of South Lakeland residents accessing drug and alcohol treatment services. Whilst this provides a valuable profile, it only captures information on those in treatment and therefore is not a true picture of drug use in South Lakeland.

Significantly, the majority (65%) of clients are accessing alcohol treatment services and in relation to drugs, almost 25% claim heroin to be their first choice of drug use. Almost 75% are classed as having no housing problems. Data suggests that those who use heroin are likely to have used for the first time before the age of 19 years.

Whilst substance misuse is an important issue for the area, it has been difficult to establish how the CDRP can add value to existing work carried out by key partners, in particular Cumbria Police and Cumbria Primary Care Trust (PCT). This has been identified as a major issue for the CDRP and work continues to determine a clear future role for CDRPs and to re-engage with Cumbria Drug and Alcohol Action Team (DAAT)

4.8 Prolific Offenders

Joint agency work to target prolific and priority offenders (PPO) is an acknowledged national priority. CDRPs have the lead responsibility to ensure that mechanisms are in place in their locality to support this joint agency work, based on a national strategy.

In Cumbria, this works falls under the remit of the Scafell Project, a model that tackles the rehabilitate and resettle element of the strategy, using an offender management model. Nationally, this model is considered best practice, leading the way on the reduction of offending by PPOs.

Through the Scafell Project, part funded through the Safer and Stronger Communities Thematic Partnership, Cumbria Police and Probation Service, multi agency teams deliver intensive monitoring, support and supervision to PPOs, with the specific intention to reduce crime and the impact on victims, as well as making the best use of local resources.

Therefore, there are no plans by South Lakeland CDRP to duplicate effort or resources by addressing this issue separately.

4.9 Road Safety

Road safety is an important aspect of community safety and considerable work is undertaken by the Cumbria Road Safety Partnership to improve road safety, build respect among road users and ultimately to reduce the numbers of killed or seriously injured on Cumbria roads.

Although South Lakeland CDRP has made financial contributions to 2 initiatives linked to road safety and specifically targeting anti social driving, one led by the Road Safety Partnership in South Cumbria and the other by Cumbria Fire & Rescue Service, it is not likely to duplicate efforts or resources further by including road safety as a CDRP priority.

5. Conclusion & Recommendations

Based on the results of the 6 month review and the “light touch” Strategic Assessment, the recommendations are that South Lakeland CDRP continue working to the same crime priorities listed below. Crime data will be monitored on a regular basis by all task groups, but particularly the acquisitive crime group, to determine if changes in the economic climate are impacting on burglary, vehicle crime and retail crime figures.

The recommendations are:

1. The following themes to remain as priorities for year 2 of the South Lakeland CDRP 3 year rolling Partnership Plan, addressed within the existing task group structure.

- ◆ Anti social behaviour, including youth disorder
- ◆ Acquisitive Crime, including theft of and from motor vehicles and burglary dwelling
- ◆ Criminal Damage
- ◆ Violent Crime, including alcohol related violence
- ◆ Domestic Violence
- ◆ Public Reassurance

2. Substance Misuse (Drugs) remain a priority for South Lakeland CDRP, with further work to be completed to determine the role and remit of CDRP

3. Prolific and Priority Offenders remain a priority for South Lakeland CDRP, addressed through the Scafell Project

4. The Safer and Stronger Communities Thematic Partnership be advised of the South Lakeland CDRP priorities for 2009 /2010

6. Acknowledgements

The Partnership would like to thank the South Cumbria Police Area Analyst, who produced the Strategic Assessment that helped to inform this document.

7. Contact details

Further copies of this document are available from the South Lakeland District Council website www.southlakeland.gov.uk or from the Strategy and Performance Unit, South Lakeland House, Lowther Street, Kendal, LA9 4UQ. ☎ 01539 733333 or e mail policy@southlakeland.gov.uk